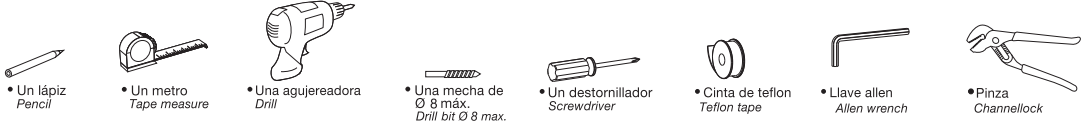


Instalación del barral

Slide bar installation

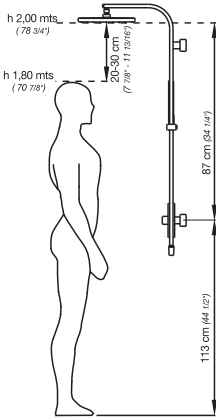
Que necesita?

What do you need?



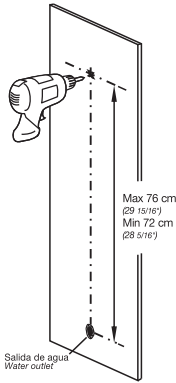
1 Medidas de instalación sugeridas.

Suggested installation measurements.



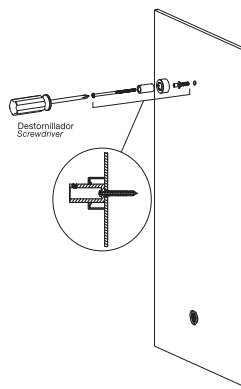
2 Marque el agujero y perforo.

Mark the hole and drill.



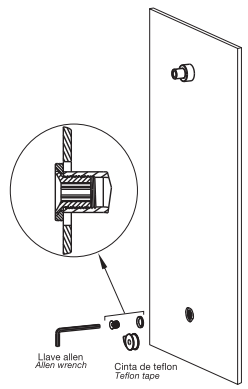
3 Fije el soporte

Fix the support.



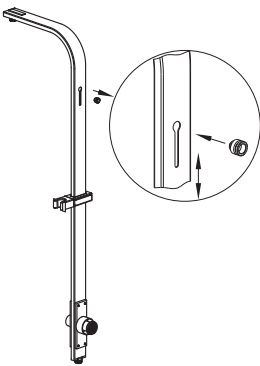
4 Coloque el conector

Place the connector.



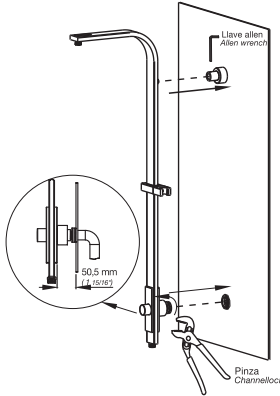
5 Coloque el buje.

Put the bushing.



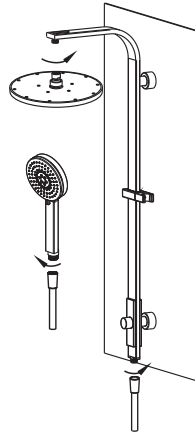
6 Instale el barral de ducha.

Install shower bar.



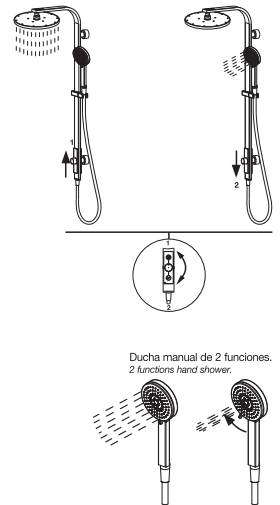
7 Conecte la ducha al barral y luego la ducha manual

Connect the shower to the bar and the handshower to the flexible hose.



8 Funciones del kit.

kit functions.



FV S.A.
Bernardo de Irigoyen 1053
B1604AFC - Florida
Pcia. de Buenos Aires - Argentina
novum.fvsa.com
Tel.: (011) 4730-5300
Fax: (011) 4730-5363

Centro de Atención al Usuario FV Responde para todo el País

Tel.: 0810-555-5300

Email: fvresponde@fvsa.com

Sucursal:

Baño Blanca
Paseynación 74 - 88000OB Baño Blanca
Tel.: (0291) 456-1999

Mendoza
Maipú 235 - M5500CVC Mendoza
Tel.: (0261) 438-0528
Rosario
Eva Perón 5357 - S2000BQJ Rosario
Tel.: (0341) 456-2339

Tucumán
Julio 779 - T4000GCO Tucumán
Tel.: (0381) 424-2274
Córdoba
Unguitza 2265 - X5001TR Córdoba
Tel.: (0351) 471-8863

FOLLFR130.01 / ED2 - Octubre 2014

FV S.A. se reserva el derecho de introducir mejoras y/o modificaciones de diseño sin previo aviso.

FV S.A. reserve the right to make revisions without notice in the design of faucets and bathroom accessories or in packaging.